



# Akt/PI3 Kinase Signaling

## ANTIBODIES AND REAGENTS

### PI3 Kinase Antibodies

### NFκB Antibodies

### Neuroscience Antibodies

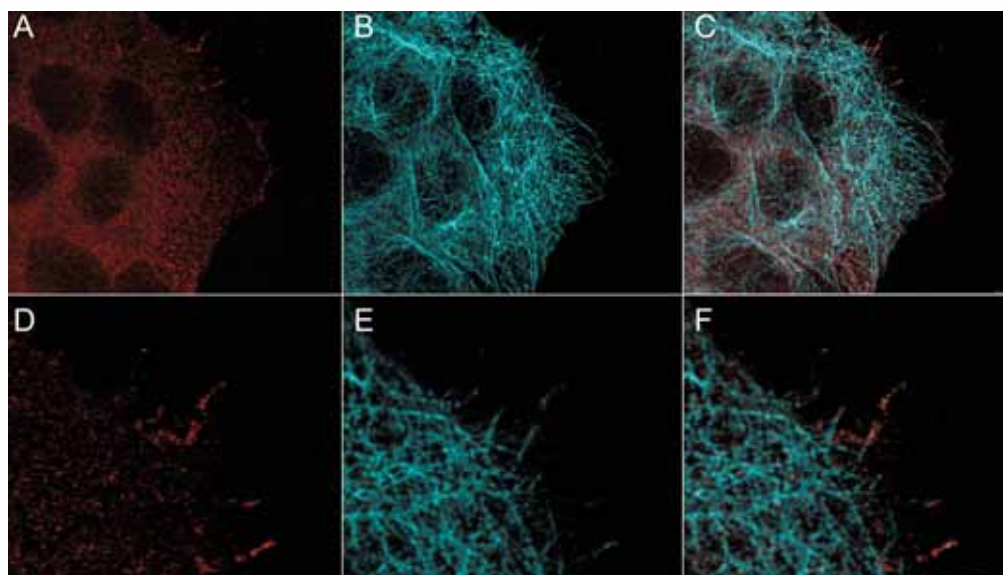
### GFP and Epitope Tag Antibodies

### Secondary Antibodies

### Substrates

### Blocking Solutions

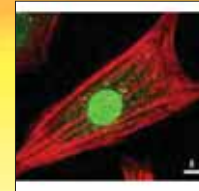
AKT is a component of the PI3 Kinase pathway and is activated by phosphorylation at Ser 473 and Thr 308. AKT exhibits tight control over cell proliferation and cell viability. Overexpression or inappropriate activation of AKT is noted in many types of cancer, diabetes and heart disease. AKT mediates many of the downstream events of PI3 Kinase (a lipid kinase activated by growth factors, cytokines and insulin). PI3 Kinase recruits AKT to the membrane, where it is activated by PDK1 phosphorylation. Once phosphorylated, AKT dissociates from the membrane and phosphorylates targets in the cytoplasm and the cell nucleus. AKT has two main roles: (i) inhibition of apoptosis; (ii) promotion of proliferation.



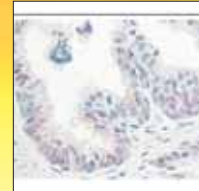
High resolution STED IF nanoscopy. Rockland Immunochemicals Anti AKT pS473 monoclonal antibody (Cat no: 200-301-268) was used at 10 ug/ml for 1 h at RT to stain A431 cells after serum deprivation for 12h. Cells were fixed in 4% PFA for 5' and after washes blocked with 10% NGS / 0.2% Triton X-100 for 30'. Phosphorylated AKT (red) is observed to be localized in the cytoplasm (A) and also organized at the periphery of the cells (D). Sequential staining at 1.4 ug/ml for 1 h at RT with Anti Alpha Tubulin (Rabbit) (Cat no: 600-401-880) is shown in panels B & E. The merge images (C & F) show p-AKT colocalized with the microtubule network. High magnification images (D, E & F) show p-AKT appears to be proximal to microtubules. Images were taken with a 100X objective on a Leica TCS STED (Stimulated Emission and Depletion), Leica Microsystems, Inc. Exton, PA, USA. *Personal communication, Myriam Gastard, Leica Microsystems, Inc. Exton, PA, USA.*

PRODUCT NAME	CATALOG#	APPLICATIONS	SIZE
Anti-AKT pS473 Monoclonal Antibody <i>Trial Size</i>	200-301-268S	IF, IHC, WB, IP, ELISA	25µl
Anti-AKT pS473 Monoclonal Antibody	200-301-268	IF, IHC, WB, IP, ELISA	100µg
DyLight™ 488 Conjugated Anti-AKT pS473 Monoclonal Antibody	200-341-268	IF, IHC, WB, IP, ELISA	100µg
DyLight™ 549 Conjugated Anti-AKT pS473 Monoclonal Antibody	200-342-268	IF, IHC, WB, IP, ELISA	100µg
DyLight™ 649 Conjugated Anti-AKT pS473 Monoclonal Antibody	200-343-268	IF, IHC, WB, IP, ELISA	100µg

PRODUCT NAME	CATALOG#	APPLICATIONS	SIZE
Anti-AKT pan (Mouse Mab)	200-301-401	WB, IP, E	100µg
Anti-AKT pan (Rabbit)	100-401-401	IHC, IF, WB, IP, E	200µl
Anti-AKT pan (Sheep)	600-601-401	WB, IP, E	100µg
Anti-AKT Phospho pS473 (Mouse Mab)	200-301-268	IHC, IF, WB, IP, E	100µg
Anti-AKT Phospho pS473 (Rabbit)	600-401-268	IHC, IF, WB, IP, E	100µg
Anti-AKT Phospho pT308 (Mouse Mab) <i>Trial Size</i>	200-301-269S	IHC, WB, IP, E	25µl
Anti-AKT Phospho pT308 (Mouse Mab)	200-301-269	IHC, WB, IP, E	100µg
DyLight™ 488 Conj. Anti-AKT Phospho pT308 (Mouse Mab)	200-341-269	IHC, IF, WB, IP, E	100µg
DyLight™ 549 Conj. Anti-AKT Phospho pT308 (Mouse Mab)	200-342-269	IHC, IF, WB, IP, E	100µg
DyLight™ 649 Conj. Anti-AKT Phospho pT308 (Mouse Mab)	200-343-269	IHC, IF, WB, IP, E	100µg
Anti-AKT Phospho pT308 (Rabbit)	600-401-269	IHC, WB, IP, E	100µg
Anti-AKT2 (Rabbit)	600-401-425	WB, IP, E	100µg
Anti-ATM Protein Kinase pS1981 (Mouse Mab)	200-301-400	IHC, IF, WB, IP, E	100µg
Anti-ATM Protein Kinase S1981 (Rabbit)	600-401-398	IF, WB, IP, E	100µg
Anti-BAX (Rabbit Mab)	200-C01-B34	IHC, WB, IP, E	100µl
Anti-Cyclin D1 (Rabbit)	100-401-153	WB, IP, E	100µl
Anti-GSK3 alpha (Rabbit)	600-401-444	WB, IP, E	100µg
Anti-GSK3 alpha Phospho pS21 (Rabbit)	600-401-429	WB, IP, E	100µg
Anti-GSK3 beta pS9 (Rabbit)	600-401-424	IHC, WB, IP, E	100µg
Anti-IKB alpha C-terminal (Rabbit)	100-4167C	WB, IP, E	100µl
Anti-IKB beta (Rabbit)	100-4186	WB, IP, E	100µl
Anti-IKK alpha (Rabbit)	100-401-219	WB, IP, E	100µl
Anti-IKK beta (Rabbit)	100-401-220	WB, IP, E	100µl
Anti-IKKe Phospho pT501 (Rabbit)	600-401-267	WB, IP, E	100µg
Anti-MDM2 (Rabbit)	600-401-927	WB, IP, E	100µg
Anti-MDM2 Phospho pS185 (Rabbit)	600-401-423	WB, IP, E	100µg
Anti-mTOR (Rabbit)	600-401-897	WB, IP, E	100µg
Anti-mTOR Phospho pS2448 (Rabbit)	600-401-422	IHC, WB, IP, E	100µg
Anti-NFκB cRel (Rabbit)	100-4166	WB, GS, IP, E	100µl
Anti-NFκB p50 (NFκB1) (Rabbit)	100-4164	IHC, WB, GS, IP, E	100µl
Anti-NFκB p52 (Rabbit)	100-4185	WB, GS, IP, E	100µl
Anti-NFκB p65 (Rel A) (Rabbit)	100-4165	IHC, WB, GS, IP, E	100µl
Anti-NFκB p65 (Rel A) N-TERMINAL SPECIFIC (Rabbit)	100-4165N	WB, IP, E	100µl
Anti-NFκB p65 (Rel A) Phospho pS276 (Rabbit)	100-401-264	WB, E	100µl
Anti-NFκB p65 (Rel A) Phospho pS529 (Rabbit)	100-401-266	WB, IP, E	100µl
Anti-NFκB p65 (Rel A) Phospho pS536 (Rabbit)	600-401-265	IHC, WB, IP, E	100µg



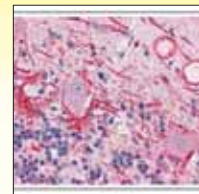
Rb anti-AKT



Ms anti-AKT pS473



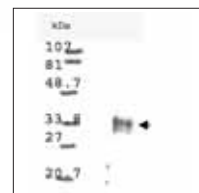
Rb anti-AKT pS473



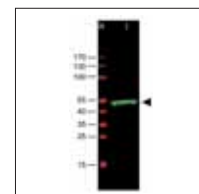
Ms anti-AKT pT308



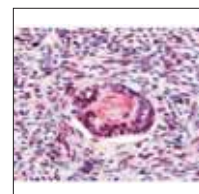
Rb Mab anti-BAX



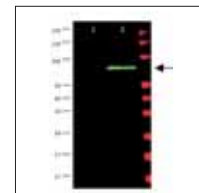
Rb anti-Cyclin D1



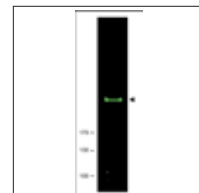
Rb anti-GSK3 alpha



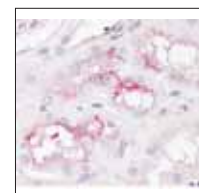
Rb anti-GSK3 beta pS9



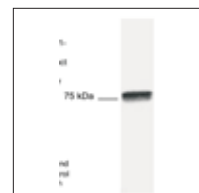
Rb anti-MDM2



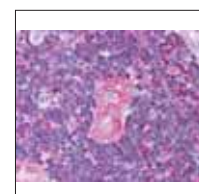
Rb anti-mTOR



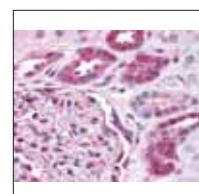
Rb anti-mTOR pS2448



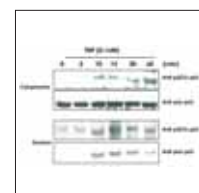
Rb anti-NFκB cRel



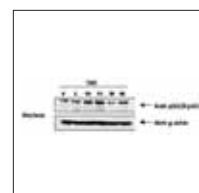
Rb anti-NFκB p50



Rb anti-NFκB p65



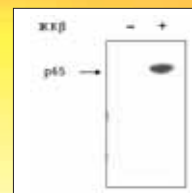
Rb anti-NFκB p65 pS276



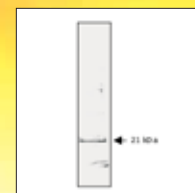
Rb anti-NFκB p65 pS529

**E - ELISA IF - Immunofluorescence IHC - Immunohistochemistry IP - Immunoprecipitation**  
**N - Neutralization RIA - Radioimmunoassay WB - Western Blotting**

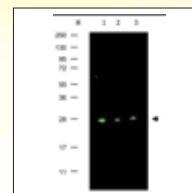
PRODUCT NAME	CATALOG#	APPLICATIONS	SIZE
Anti-NFKB p65 NLS specific (Rabbit)	600-401-271	IHC, IF, WB, IP, E	100µg
Anti-NFKB p105 (Rabbit)	100-4184	WB, E	100µl
Anti-p21 (Mouse Mab)	200-301-171	WB, IP, E	100µl
Anti-p27 (Rabbit)	100-401-172	WB, IP, E	100µl
Anti-p53 (Mouse Mab)	200-301-174	ChIP, IF, IHC, WB, IP, E	100µg
Anti-p70 S6 Kinase (Rabbit)	600-401-942	WB, IP, E	100µg
Anti-Pdcd4 (Rabbit)	600-401-965	IHC, WB, IP, E	100µg
Anti-Pdcd4 Phospho pS457 (Mouse Mab) <i>Trial Size</i>	200-301-964S	IHC, WB, IP, E	25µl
Anti-Pdcd4 Phospho pS457 (Mouse Mab)	200-301-964	IHC, WB, IP, E	100µg
Anti-Pdcd4 Phospho pS457 (Rabbit)	600-401-964	IHC, WB, IP, E	100µg
Anti-PDK1(Rabbit)	600-401-411	WB, IP, E	100µg
Anti-PI3 Kinase P110 (Rabbit)	100-401-862	WB, IP, E	100µl
Anti-PTEN (Rabbit) <i>Trial Size</i>	600-401-A90S	WB, IP, E	25µl
Anti-PTEN (Rabbit)	600-401-A90	WB, IP, E	100µg
Anti-PTEN-P1 Phospho pS29/pT32 (Rabbit)	600-401-859	WB, IP, E	100µg



Rb anti-NFKB p65 pS536



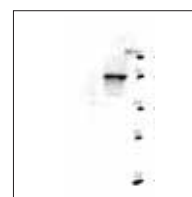
Ms anti-p21



Rb anti-p27



Ms anti-p53



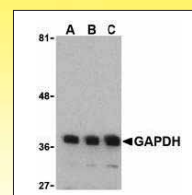
Rb anti-p70 S6



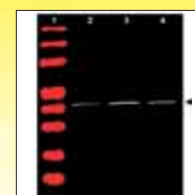
Rb anti-Pdcd4

## LOADING CONTROL ANTIBODIES

PRODUCT NAME	CATALOG#	SIZE
Anti-alpha-Tubulin [Rabbit]	600-401-880	200µg
Anti-beta-Actin (Rabbit)	600-401-886	200µg
Anti-GAPDH (Glyceraldehyde-3-Phosphate Dehydrogenase) (Rabbit)	600-401-A33	100µg
Anti-VDAC/Porin (Rabbit)	600-401-882	200µg



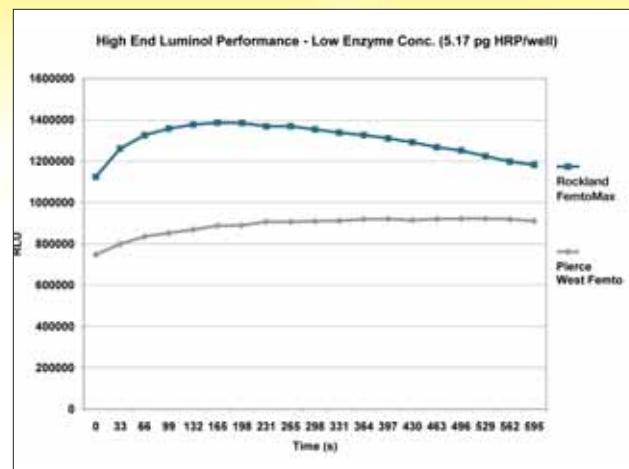
Rb anti-GAPDH



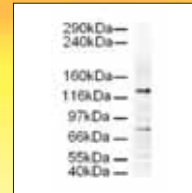
Rb anti-beta-Actin

## SUBSTRATES &amp; BLOCKING SOLUTIONS

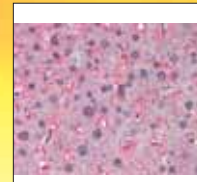
PRODUCT NAME	CATALOG#	SIZE
FemtoMax Super Sensitive Chemiluminescent HRP Substrate for Microwell and/or Membrane	FEMTOMAX-110	110ml
PicoMax Sensitive Chemiluminescent HRP Substrate for Microwell and/or Membrane	PICOMAX-110	110ml
TMB ELISA PEROXIDASE SUBSTRATE	TMBE-100	100ml
TMB ELISA PEROXIDASE SUBSTRATE	TMBE-1000	1000ml
ELISA Microwell Blocking Buffer with Stabilizer	MB-064-1000	1000ml
BOVINE SERUM ALBUMIN - BSA (Immunoglobulin and Protease Free)	BSA-50	50g
30% BOVINE SERUM ALBUMIN SOLUTION	BSA-30	500ml
Blocking Buffer for Fluorescent Western Blotting	MB-070	500ml
BLOTTO Immunoanalytical Grade (Non-Fat Dry Milk)	B501-0500	500g
GOAT SERUM (Blocking Grade)	B304	10ml
MOUSE SERUM (Blocking Grade)	B308	10ml



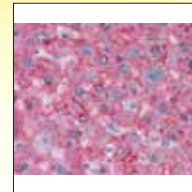
PRODUCT NAME	CATALOG#	APPLICATIONS	SIZE
Anti-AP2A (Goat)	600-101-287	WB, IP, E	100µg
Anti-AP3D1 (Goat)	600-101-290	WB, IP, E	100µg
Anti-Apolipoprotein A-1 (Human) (GOAT)	600-101-109	IHC, WB, E	1.0mg
Anti-Apolipoprotein B (Human) (GOAT)	600-101-111	IHC, WB, E	1.0mg
Anti-Apolipoprotein E (Human) (GOAT)	600-101-197	IHC, WB, E	500µg
Anti-Beta Amyloid (Rabbit)	600-401-253	WB, IP, E	100µg
Anti-CATALASE (Bovine Liver) (Rabbit)	200-4151	WB, IP, E	50mg
Anti-COX-2 (Rabbit)	100-401-226	WB, IP, E	100µl
Anti-Dab1 (400-555) (Mouse) (Rabbit)	100-401-225	IHC, WB, IP, E	100µl
Anti-DELTA-4 (Rabbit)	600-401-696	IHC, WB, IP, E	100µg
Anti-EGR-1 (Rabbit)	600-401-693	IHC, WB, IP, E	100µg
Anti-FREQUENIN (RABBIT)	600-401-216	IF, WB, IP, E	100µg
Anti-Gli1 (803-818) (Rabbit)	100-401-223	WB, IP, E	100µl
Anti-Gli-2 (Rabbit)	600-401-845	IHC, WB, IP, E	100µg
Anti-Mouse Gli-2 (Rabbit)	600-401-695	IHC, WB, E	100µg
Anti-Gli-3 (Rabbit)	600-401-694	IHC, WB, E	100µg
Anti-Heat Shock Protein 27 (HSP27) (Mouse Mab)	200-301-243	IHC, WB, IP, E	100µg
Anti-Huntington Phospho pS421 (Rabbit)	600-401-433	IHC, WB, IP, E	100µg
Anti-Jagged-1 (Rabbit)	200-401-698	IHC, IF, WB, IP, E	500µg
Anti-Nestin (Rabbit)	600-401-417	WB, IP, E	100µg
Anti-Neuraminidase2 (Neu2) (Rabbit)	600-401-850	WB, IP, E	100µg
Anti-Nitrotyrosine (Mouse Mab)	200-301-A98	IHC, WB, IP, E	100µg
Anti-NOTCH 1 (Cleaved N terminal) (Rabbit)	100-401-407	WB, IP, E	200µl
Anti-NOTCH 1 (intra) (Human specific) (Rabbit)	100-401-405	WB, IP, E	200µl
Anti-NOTCH 2 (Cleaved N terminal) (Rabbit)	100-401-408	WB, IP, E	200µl
Anti-NOTCH 2 (intra) (Human specific) (Rabbit)	100-401-406	WB, IP, E	200µl
Anti-ROBO-1 (Rabbit)	600-401-692	IHC, WB, E	100µg
Anti-S100 Protein (Rabbit)	200-401-874	IHC, WB, E	500µg
Anti-Selenoprotein W (Rabbit)	600-401-A29	WB, IP, E	100µg
Anti-SLIT-1 (Rabbit)	600-401-860	WB, IP, E	100µg
Anti-SLIT-2 (Rabbit)	600-401-846	WB, IP, E	100µg
Anti-SLIT-3 (Rabbit)	600-401-884	WB, IP, E	100µg
Anti-Tau (Rabbit Mab)	200-C01-B33	IHC, WB, IP, E	100µl
Anti-Tetanus Toxin fragment C (TTFC) (Rabbit)	100-401-894	WB, IP, E	100µl
Anti-Zic-1 (Mouse/Human) (Rabbit)	200-401-159	WB, IP, E	100µg
Anti-ZIC-2 (Rabbit)	600-401-848	WB, IP, E	100µg



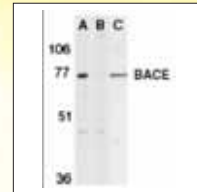
Gt anti-AP3D1



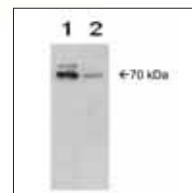
Gt anti-Apolipoprotein A1



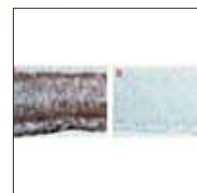
Gt anti-Apolipoprotein B



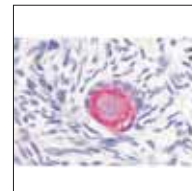
Rb anti-BACE



Rb anti-COX-2



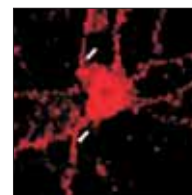
Rb anti-Dab1



Rb anti-DELTA-4



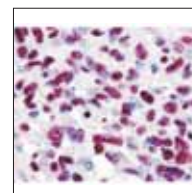
Rb anti-EGR-1



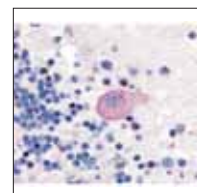
Rb anti-Frequenin



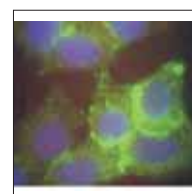
Rb anti-Gli-2



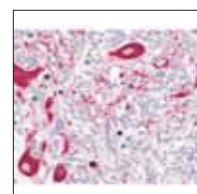
Rb anti-Gli-3



Rb anti-Huntington pS421



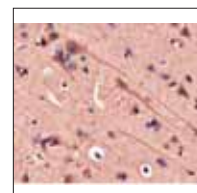
Rb anti-Jagged



Rb anti-ROBO-1



Rb anti-S100 Protein



Rb Mab anti-Tau

# Green Fluorescent Protein (GFP) & Red Fluorescent Protein (RFP) Antibodies

Green fluorescent protein (GFP), initially isolated from the jellyfish *Aequorea victoria*, has enabled major progress in cell biology through studies of dynamic cellular processes by fluorescence microscopy. GFP-fusion protein constructs have also become a standard tool to study gene expression in cells, tissues and animals.

Rockland Immunochemicals GFP and RFP antibodies and antibody conjugates provide the researcher with unmatched Level of Detection (LOD), brightness and photostability. For two and three color combinations with GFP, we recommend our DyLight™ Dye secondary antibodies.

Anti-GFP antibodies are suitable for signal amplification methods in cells or tissue. They also make excellent haptens that can be recognized by secondary detection reagents in applications such as *in situ* hybridization, enzyme-linked immunosorbent assay (ELISA) techniques, and detection of labeled targets on blots.

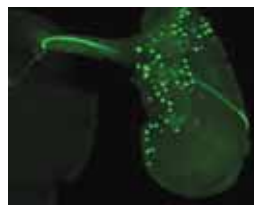
**Applications:** Western Blotting, Immunohistochemistry, ELISA, Odyssey® Infrared Imaging System, Fluorescence Microscopy.

## Anti-GFP (Green Fluorescent Protein) Host: Rabbit

Unconjugated	600-401-215	100µg
Fluorescein	600-402-215	100µg
Biotin	600-406-215	100µg
Peroxidase	600-403-215	100µg

## Anti-GFP (Green Fluorescent Protein) Host: Goat

Unconjugated	600-101-215	1.0mg
Fluorescein	600-102-215	1.0mg
DyLight™ 488	600-141-215	100µg
Texas Red	600-109-215	1.0mg
DyLight™ 549	600-142-215	100µg
DyLight™ 649	600-143-215	100µg
Rhodamine	600-100-215	1.0mg
Biotin	600-106-215	1.0mg
Peroxidase	600-103-215	1.0mg
Alkaline Phosphatase	600-105-215	1.0mg
IRDye700®	600-130-215	500µg
IRDye800®	600-132-215	500µg



Immunofluorescence microscopy. Rockland Immunochemicals Chicken-anti-GFP was used to detect a recombinant tau-myc-GFP protein expressed *in situ* under the control of the KruppelGAL4 driver line in *Drosophila* eye disc. Detection occurred using the anti-GFP antibody diluted 1:500 (green) for 2 h at RT followed by a 1:300 dilution of 488 conjugated anti-Chicken IgG for 1 h at RT. Blocking occurred using 5% NGS in PBS with 0.1% Triton X-100 for 15 min. In separate experiments, endogenous GFP was not detectable after fixation without antibody staining (data not shown). Images were collected using a Leica TCS SP1 confocal imaging system. *Personal Communication, Haluk Lacin, Developmental Biology Program and Jim Skeath, Genetics Department, Washington University School of Medicine, St. Louis, MO.*

IRDye® is registered trademarks of LI-COR, Inc. DyLight™ is a Trademark of Thermo Fisher Scientific Inc.

## Anti-GFP (Green Fluorescent Protein) Host: Mouse MAB

Unconjugated	600-301-215	1.0mg
Fluorescein	600-302-215	1.0mg
DyLight™ 488	200-341-215	100µg
Texas Red	600-309-215	1.0mg
DyLight™ 549	200-342-215	100µg
DyLight™ 649	200-343-215	100µg
Biotin	600-306-215	1.0mg
Peroxidase	600-303-215	1.0mg
Alkaline Phosphatase	600-305-215	1.0mg

## Anti-GFP (Green Fluorescent Protein) Host: Chicken

Unconjugated	600-901-215S	25µl
Unconjugated	600-901-215	100µg
Unconjugated	600-901-B12	300µg

## Green Fluorescent Protein (GFP) Control

GFP (wild type) is intended for use as a control when using polyclonal or monoclonal anti-GFP in immunological assays. Polyclonal anti-GFP can detect GFP by ELISA (sandwich or capture) or western blot. Biotin conjugated polyclonal anti-GFP used in a sandwich ELISA is well suited to titrate GFP in solution when used in combination with monoclonal anti-GFP.

000-001-215 100µg

## Anti-RFP (Red Fluorescent Protein) Host: Rabbit

Unconjugated	600-401-379	100µg
Fluorescein	600-402-379	100µg
Biotin	600-406-379	100µg
Peroxidase	600-403-379	100µg



## EPITOPE TAG ANTIBODIES

Anti-6X His (Rabbit)	600-401-382	100µg	Anti-GST (Goat)	600-101-200	1.0mg
Anti-Beta Galactosidase (Rabbit)	200-4136	10mg	Anti-GST (Mouse)	200-301-200	500µg
Anti-FLAG (Rabbit)	600-401-383	250µg	Anti-Myc (Rabbit)	600-401-381	100µg
Anti-FLAG (Mouse)	200-301-383	100µg	Anti-HA (Rabbit)	600-401-384	100µg

PRODUCT	HOST	DyLight™ 488 A=493 / E=518	DyLight™ 549 A=550 / E=568	DyLight™ 680 A=682 / E=715	IRDye® 800 A=770 / E=794	Peroxidase HRP
<b>Anti-Chicken IgY / IgG (H&amp;L)</b>	Rabbit	603-441-002 100µg	603-442-002 100µg	603-444-002 100µg	603-431-002 500µg	603-4302 1.5mg
<b>Anti-Goat IgG (H&amp;L)</b>	Rabbit	605-441-002 100µg	605-442-002 100µg	605-444-002 100µg	603-431-002 500µg	605-4302 2.0mg
<b>Anti-Goat IgG (H&amp;L)</b> (Min X Ch GP Ham Hs Ms Rb & Rt Serum Proteins)	Donkey	605-741-125 100µg	605-742-125 100µg	605-744-125 100µg	605-431-002 500µg	605-703-125 1.0mg
<b>Anti-Goat Fc</b>	Rabbit	605-441-003 100µg	605-442-003 100µg	605-444-003 100µg	605-431-003 500µg	605-4303 2.0mg
<b>Anti-Guinea Pig (H&amp;L)</b> (Min X Bv Ch Gt Ham Hs Hu Ms Rb Rt & Sh Serum Proteins)	Goat	606-141-129 100µg	606-142-129 100µg	606-144-129 100µg	606-131-129 500µg	606-103-129 1.0mg
<b>Anti-Hamster Golden Syrian &amp; Armenian IgG (H&amp;L)</b> (Min X Ms and Rt Serum Proteins)	Goat	620-141-440 100µg	620-142-440 100µg	620-144-440 100µg	620-131-440 500µg	620-103-440 1.0mg
<b>Anti-Human IgG (H&amp;L)</b> (Min X Bv Ch Gt GP Ham Hs Ms Rb Rt & Sh Serum Proteins)	Goat	609-141-123 100µg	609-142-123 100µg	609-144-123 100µg	609-131-123 500µg	609-143-123 100µg
<b>Anti-Mouse IgG (H&amp;L)</b> (Min X Bv Ch Gt GP Ham Hs Hu Rb Rt & Sh Serum Proteins)	Goat	610-141-121 100µg	610-142-121 100µg	610-144-121 100µg	610-131-121 500µg	610-103-121 1.0mg
<b>Anti-Mouse Fc</b>	Goat	610-141-003 100µg	610-142-003 100µg	610-144-003 100µg	610-131-003 500µg	610-1303 2.0mg
<b>Anti-Mouse IgM (mu chain)</b>	Goat	610-141-007 100µg	610-142-007 100µg	610-144-007 100µg	610-131-007 500µg	610-1307 1.0mg
<b>Anti-Mouse IgG (H&amp;L)</b>	Rabbit	610-441-002 100µg	610-442-002 100µg	610-444-002 100µg	610-431-002 500µg	610-4302 2.0mg
<b>Anti-Mouse IgG1</b> (gamma 1 subclass specific)	Rabbit	610-441-040 100µg	610-442-040 100µg	610-444-040 100µg	610-431-040 500µg	610-4340 1.0mg
<b>Anti-Rabbit IgG (H&amp;L)</b>	Goat	611-141-002 100µg	611-142-002 100µg	611-144-002 100µg	611-131-002 500µg	611-1302 2.0mg
<b>Anti-Rabbit IgG (H&amp;L)</b> (Min X Bv Ch Gt GP Hs Hu Ms Rt & Sh Serum Proteins)	Goat	611-141-122 100µg	611-142-122 100µg	611-144-122 100µg	611-131-122 500µg	611-103-122 1.0mg
<b>Anti-Rabbit Fc</b>	Goat	611-141-003 100µg	611-142-003 100µg	611-144-003 100µg	611-131-003 500µg	611-1303 2.0mg
<b>Anti-Rat IgG</b> (Min X Bv Ch Gt GP Ham Hs Hu Ms Rb & Sh Serum Proteins)	Goat	612-141-120 100µg	612-142-120 100µg	612-144-120 100µg	612-131-120 500µg	612-103-120 1.0mg
<b>Anti-Rat IgG (H&amp;L)</b>	Rabbit	612-441-002 100µg	612-442-002 100µg	612-444-002 100µg	612-431-002 500µg	612-4302 2.0mg
<b>Anti-Sheep IgG (H&amp;L)</b>	Rabbit	613-441-002 100µg	613-442-002 100µg	613-444-002 100µg	613-431-002 500µg	613-4302 2.0mg
<b>Anti-Sheep IgG (H&amp;L)</b> (Min X Ch GP Ham Hs Hu Ms Rb & Rt Serum Proteins)	Donkey	613-741-168 100µg	613-742-168 100µg	613-744-168 100µg	613-731-168 500µg	613-703-168 1.0mg
<b>STREPTAVIDIN</b>		S000-41 100µg	S000-42 100µg	S000-44 100µg	S000-31 500µg	S000-03 1.0mg

**Australia**

Jomar Bioscience PTY LTD  
Phone: (08) 8431 2041  
[jomar@adelaide.on.net](mailto:jomar@adelaide.on.net)  
[www.jomar.on.net](http://www.jomar.on.net)

**China**

Genetimes Technology, Inc.  
Phone: 86-21-54262677  
[order@genetimes.com.cn](mailto:order@genetimes.com.cn)  
[www.genetimes.com.cn](http://www.genetimes.com.cn)

**Denmark**

MEDINOVA Scientific A/S  
Phone: +45 39 56 20 00  
[medinova@medinova.dk](mailto:medinova@medinova.dk)  
[www.medinova.dk](http://www.medinova.dk)

**Germany**

BioMol GmbH  
Phone: 0800-2466651  
[info@biomol.de](mailto:info@biomol.de)  
[www.biomol.de](http://www.biomol.de)

**Korea**

BMS Bio-Medical Science Co.,Ltd.  
Phone: (82) 2 3471 6500  
[info@bmskorea.co.kr](mailto:info@bmskorea.co.kr)  
[www.bmskorea.co.kr](http://www.bmskorea.co.kr)

**Israel**

Enco Scientific, Ltd.  
Phone: 972-3-9349922  
[enco@netvision.net.il](mailto:enco@netvision.net.il)  
[www.enco.co.il](http://www.enco.co.il)

**Norway**

MedProbe  
Phone: +47 23 32 73 80  
[medprobe@medprobe.com](mailto:medprobe@medprobe.com)  
[www.medprobe.com](http://www.medprobe.com)

**Sweden**

In vitro Sweden AB  
Phone: (46) 8 30 60 10  
[iv@invitro.se](mailto:iv@invitro.se)  
[www.invitro.se](http://www.invitro.se)

**Taiwan**

Unimed Healthcare Inc.  
Phone: +886-2-27202215  
[sales@unimed.com.tw](mailto:sales@unimed.com.tw)  
[www.unimed.com.tw](http://www.unimed.com.tw)